



WallAttract™

Acoustic Wall Panels Collection





Fade Acoustic Wall Panels ↵



Content

01	About
02	Collection list
03	Collection overview
04	Technical data & colours
05	StickyFelt™ installation

WallAttract™

Modular acoustic wall panels combining sound absorption with modern design. Easy to install, ideal for residential and commercial interiors.

Why WallAttract?

- › Thoughtfully designed with a focus on aesthetics
- › Made from recycled PET felt
- › Modular formats & tileable patterns
- › Self-adhesive back surface - StickyFelt®
- › Create custom compositions — your wall, your rules
- › Meets sustainability and quality standards

Origin

Born from our own office needs — designed to enhance acoustics and well-being with aesthetic impact.

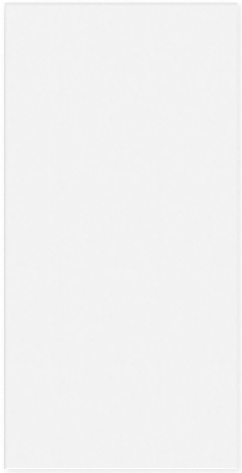
Wall Attract Collection was designed with creativity and freedom in mind. Mix and match our patterns and colors to create a truly unique space.

Change your wall into an experience with WallAttract™





Calm



Dash



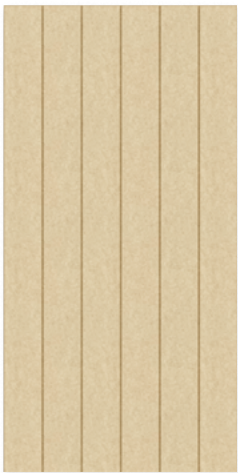
Dash Line



Vertical S



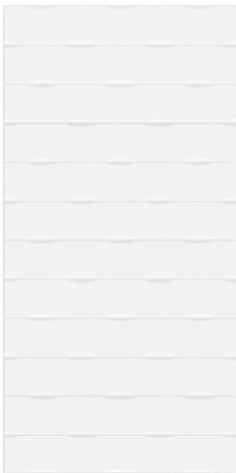
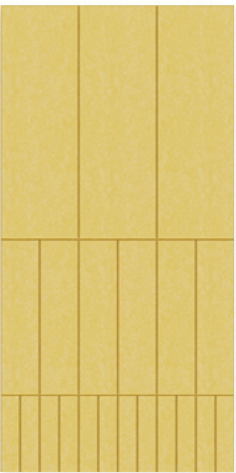
Vertical M



Vertical L



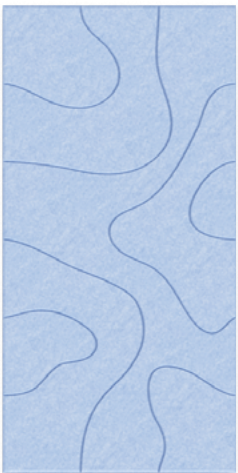
Fade



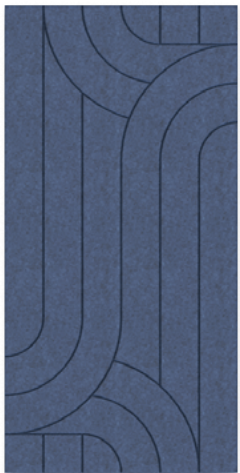
Nautical



Wiggle



Spill



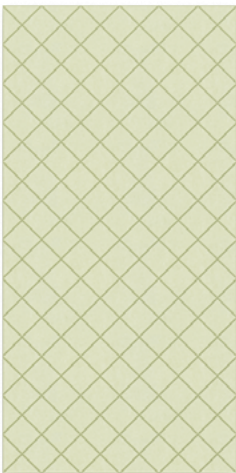
Interlace



Chevron S



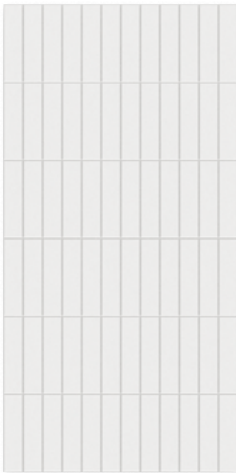
Chevron M



Caro M



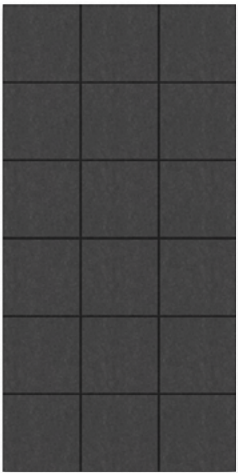
Caro L



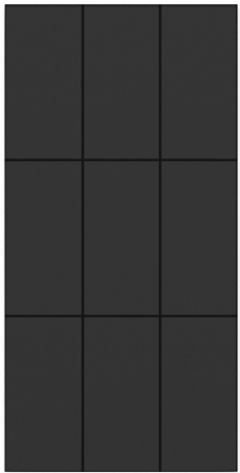
Ingots



Grid M



Grid L



Trellis



Slant



Diagonal S



Diagonal M



Diagonal L





↗ Calm DF-04 & Spill DF-53 ↖



Calm DF-53 ↗

CALM

Thickness:

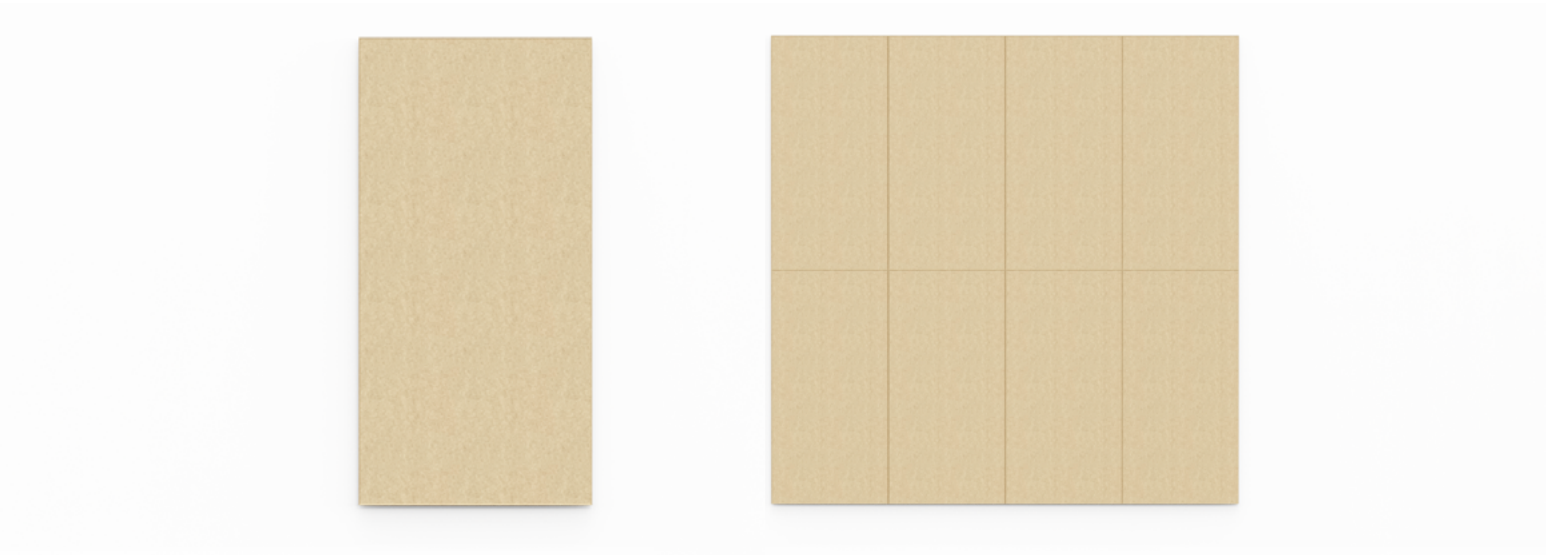
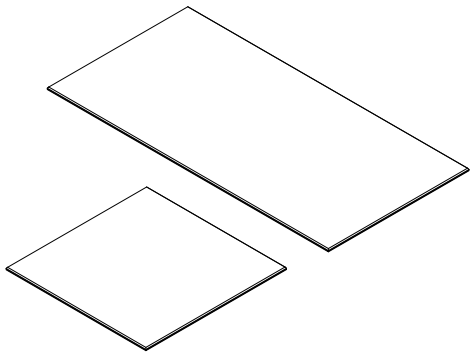
9 / 12 mm

Single panel size:

600 x 600 mm

600 x 1200 mm

600 x 2400 mm





↗ Dash DF-42



Dash DF-02 ↖

DASH

Thickness:

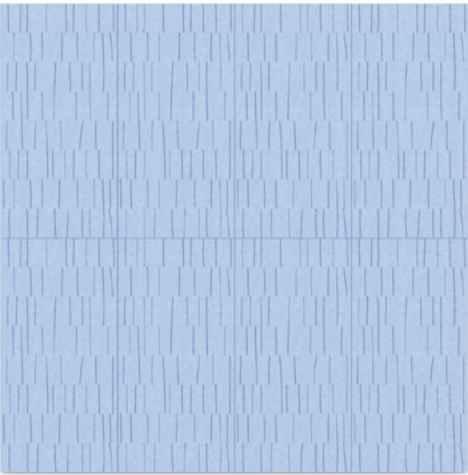
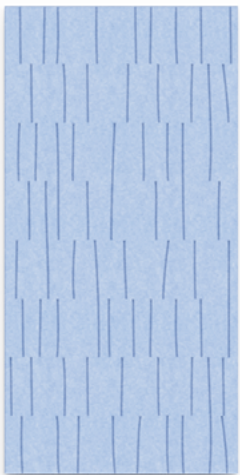
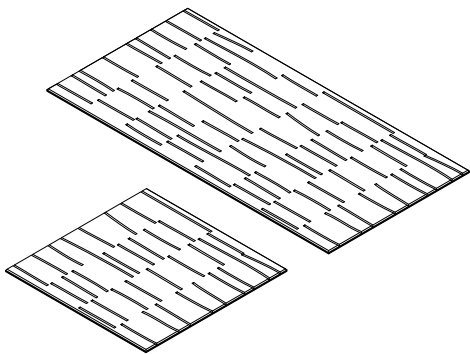
9 / 12 mm

Single panel size:

600 x 600 mm

600 x 1200 mm

600 x 2400 mm





↗ Dash Line DF-32

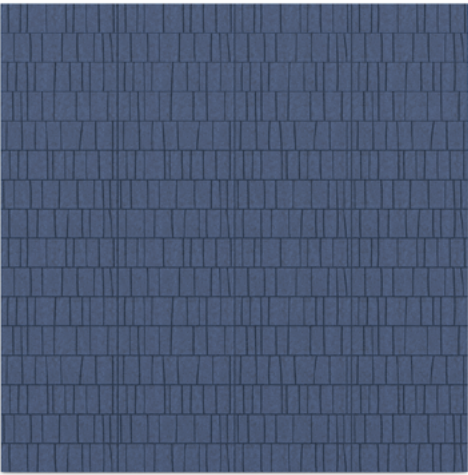
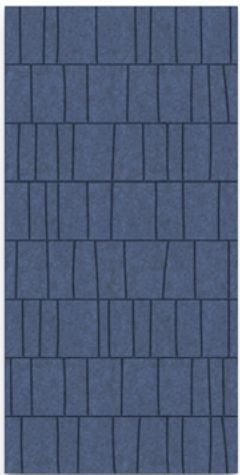
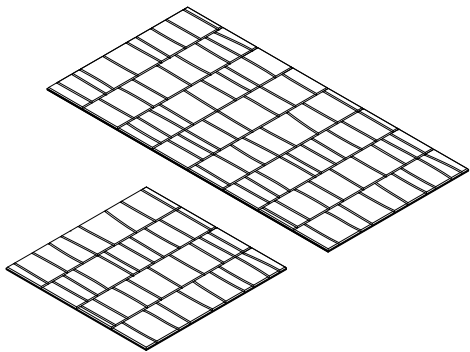


Dash Line DF-24 ↖

DASH LINE

Thickness:
9 / 12 mm

Single panel size:
600 x 600 mm
600 x 1200 mm
600 x 2400 mm





↗ Vertical S/M/L DF-53

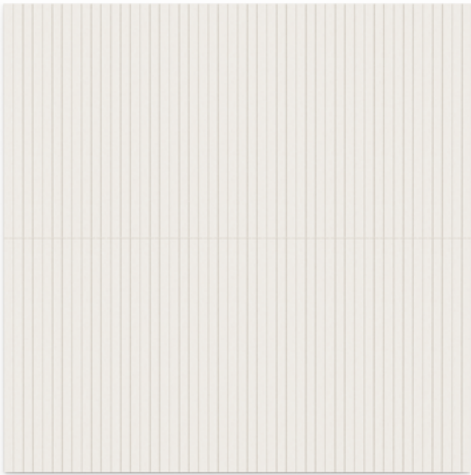
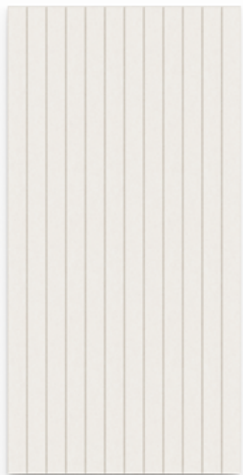
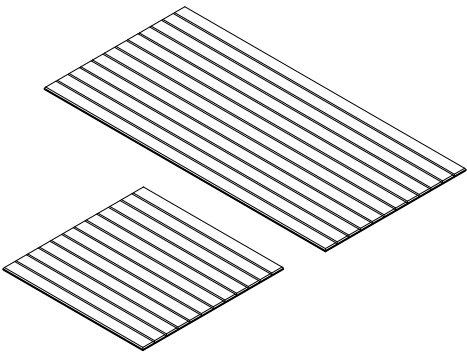


Vertical S/M/L DF-57 ↖

VERTICAL S

Thickness:
9 / 12 mm

Single panel size:
600 x 600 mm
600 x 1200 mm
600 x 2400 mm





↗ Vertical M/L DF-08, DF-15

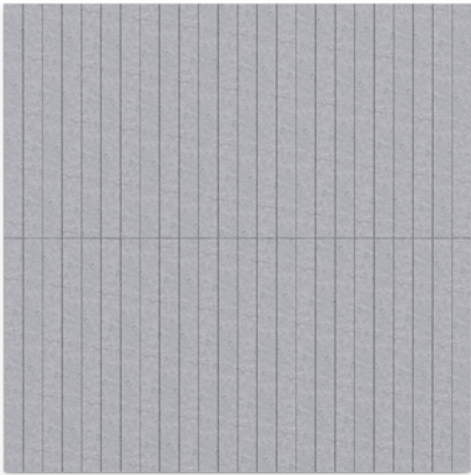
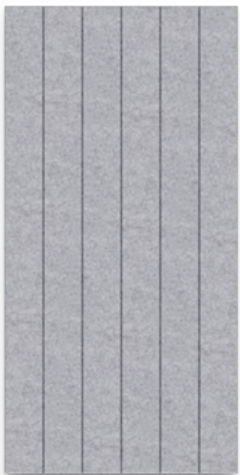
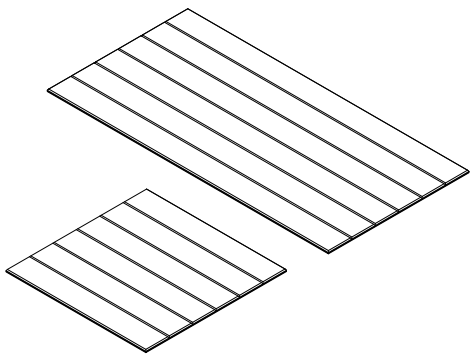


Vertical S/M/L DF-07 ↖

VERTICAL M

Thickness:
9 / 12 mm

Single panel size:
600 x 600 mm
600 x 1200 mm
600 x 2400 mm





↗ Vertical S/M/L DF-53



Vertical L DF-16 ↖

VERTICAL L

Thickness:

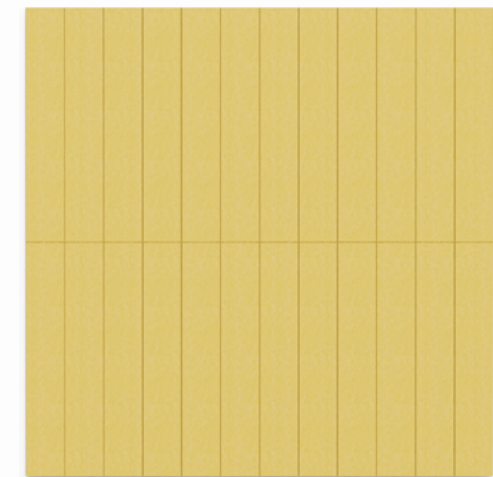
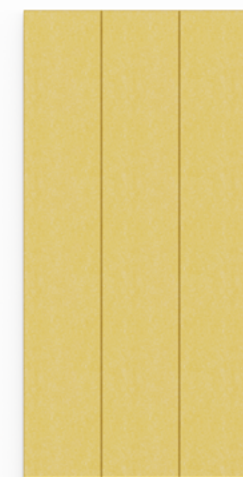
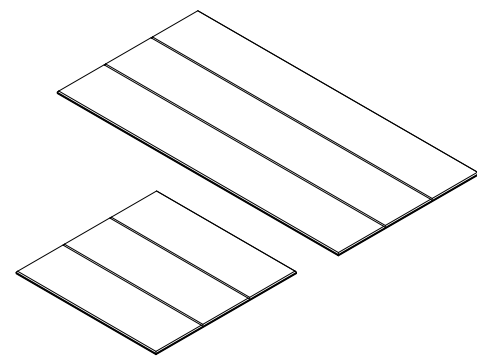
9 / 12 mm

Single panel size:

600 x 600 mm

600 x 1200 mm

600 x 2400 mm





↗ Fade DF-19

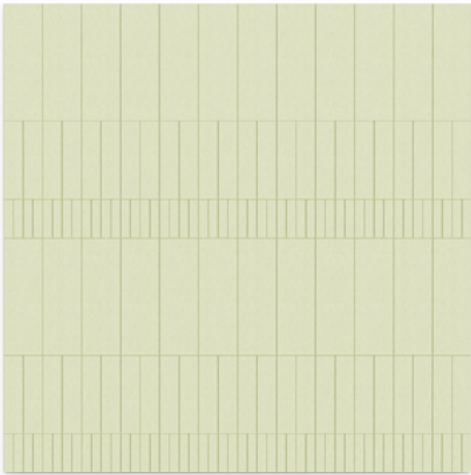
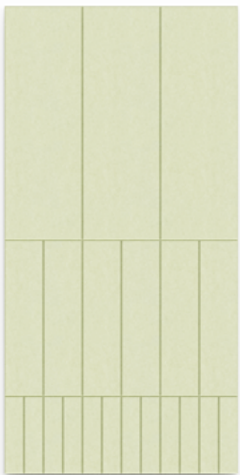
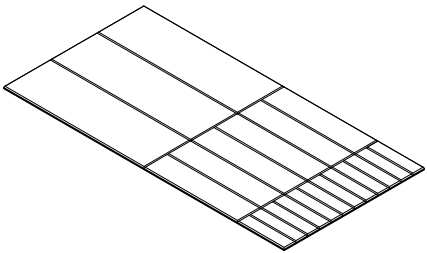


Fade DF-08 ↖

FADE

Thickness:
9 / 12 mm

Single panel size:
600 x 1200 mm





➤ Nautical DF-57

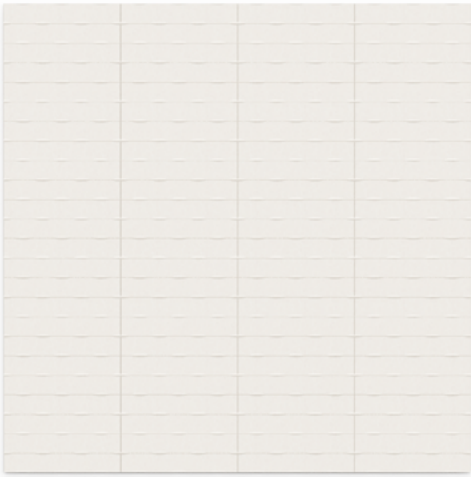
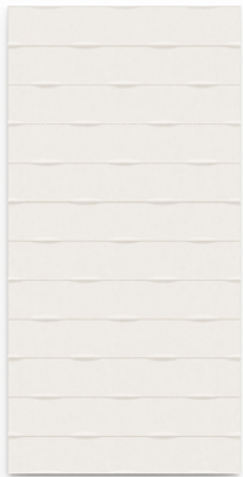
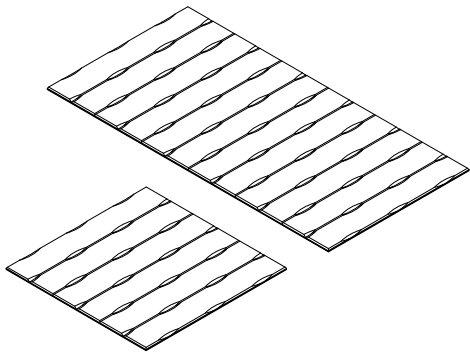


Nautical DF-04 ➤

NAUTICAL

Thickness:
9 / 12 mm

Single panel size:
600 x 600 mm
600 x 1200 mm
600 x 2400 mm





↗ Wiggle DF-07

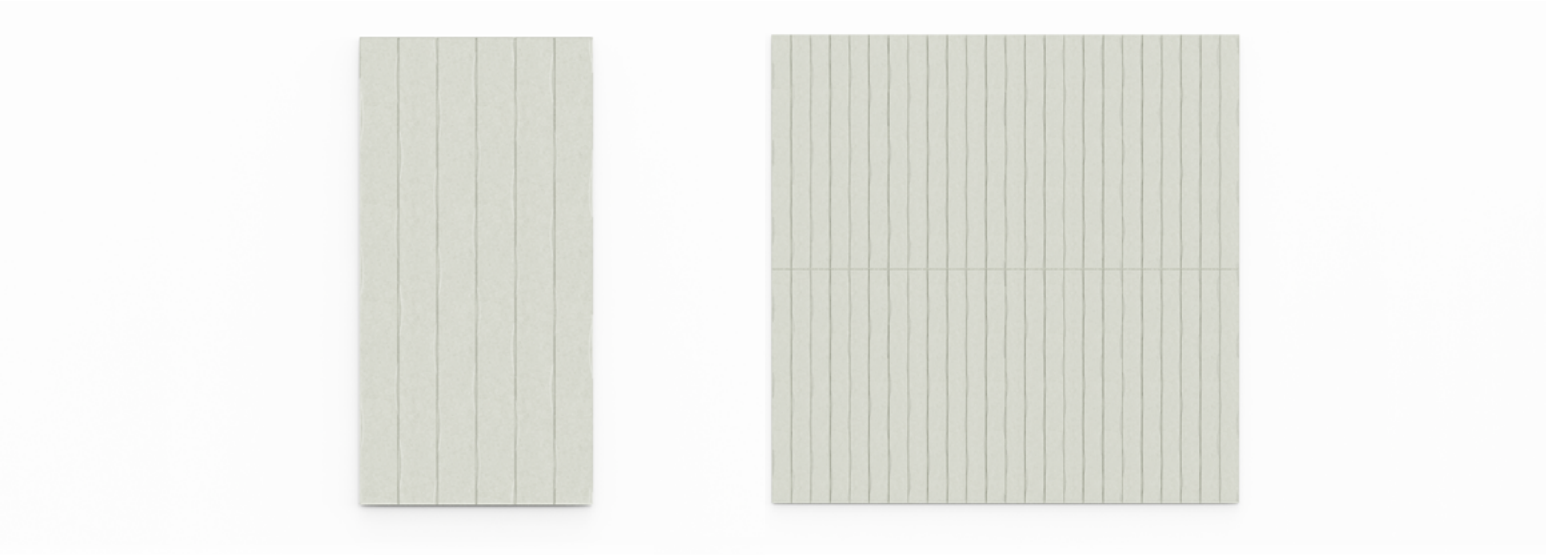
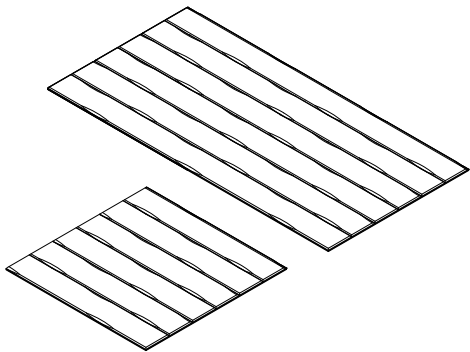


Wiggle DF-07 ↖

WIGGLE

Thickness:
9 / 12 mm

Single panel size:
600 x 600 mm
600 x 1200 mm
600 x 2400 mm





↗ Spill DF-58



Spill DF-19 ↖

SPILL

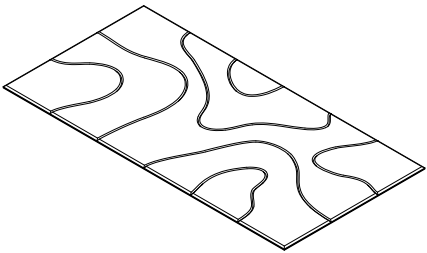
Thickness:

9 / 12 mm

Single panel size:

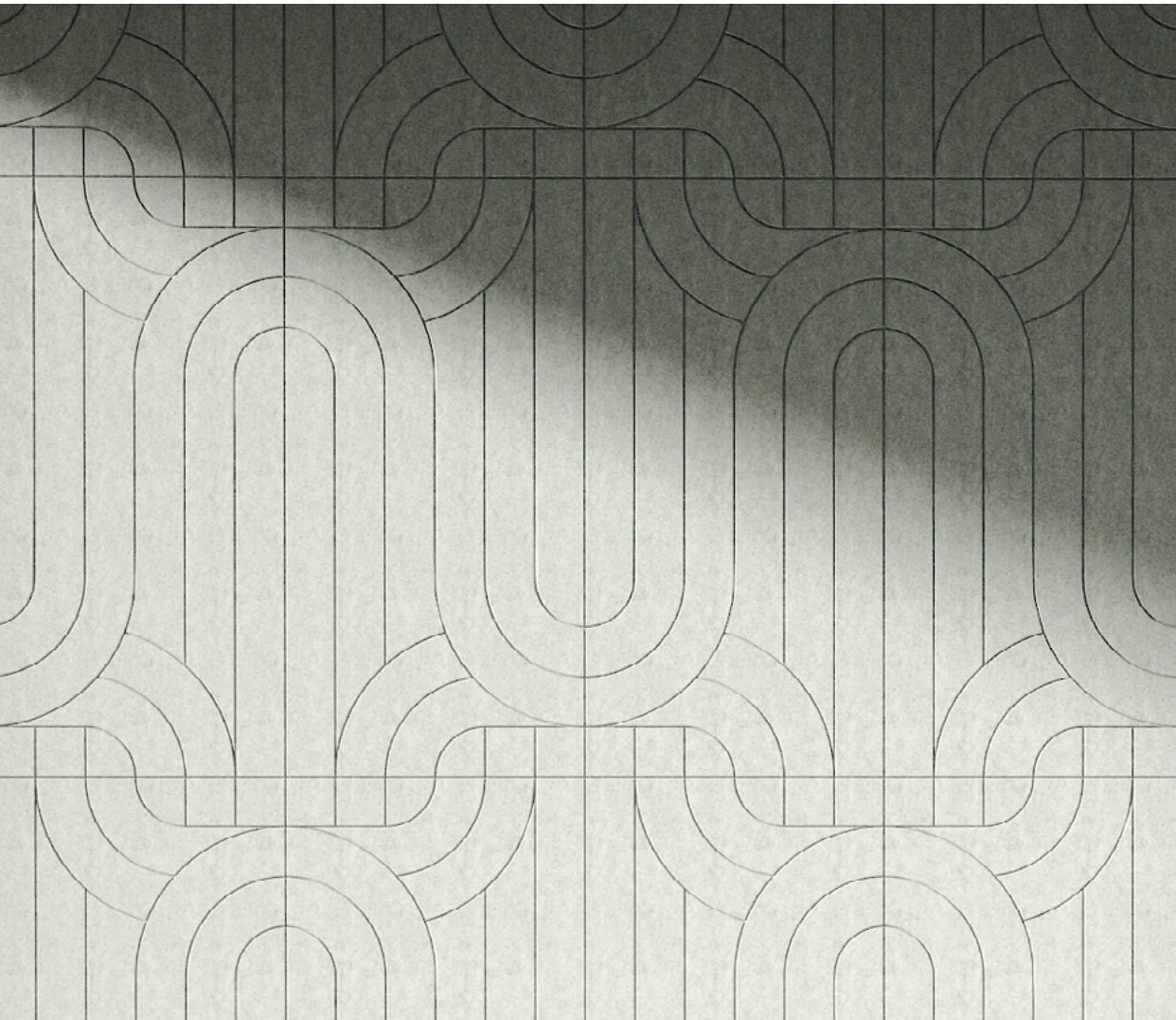
600 x 1200 mm

Pattern includes 4 types of tiles, each in equal quantity.





↗ Interlace DF-08



Interlace DF-07 ↖

INTERLACE

Thickness:

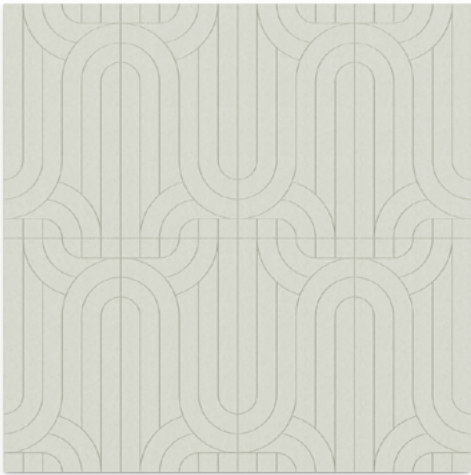
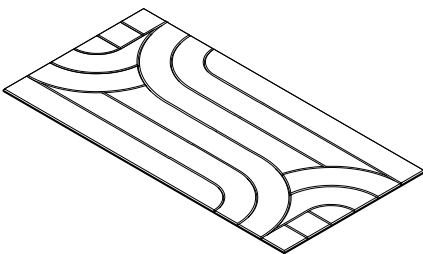
9 / 12 mm

Single panel size:

600 x 1200 mm

600 x 2400 mm

Pattern includes 2 types of tiles,
each in equal quantity.





↗ Chevron S DF-58

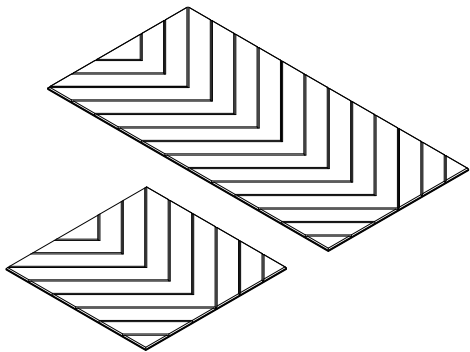


Chevron S DF-16↖

CHEVRON S

Thickness:
9 / 12 mm

Single panel size:
600 x 600 mm
600 x 1200 mm
600 x 2400 mm





↗ Chevron M DF-23

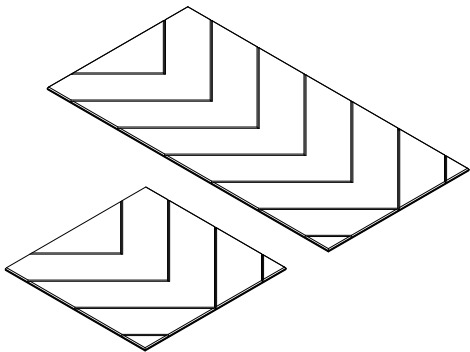


Chevron M DF-23 ↖

CHEVRON M

Thickness:
9 / 12 mm

Single panel size:
600 x 600 mm
600 x 1200 mm
600 x 2400 mm





↗ Caro M/L DF-07

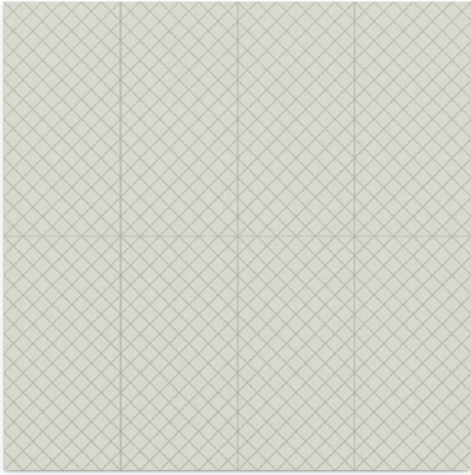
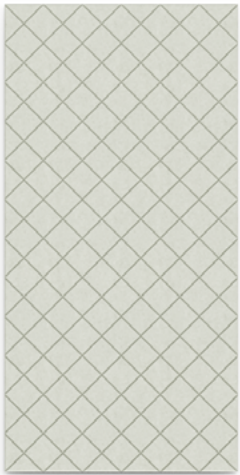
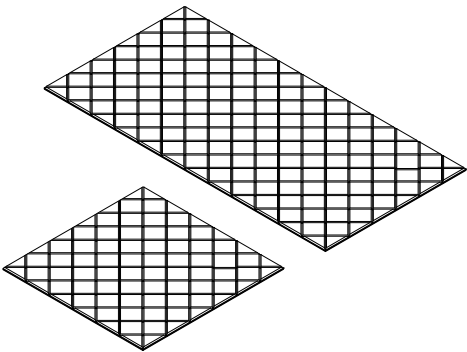


Caro M/L DF-15 ↖

CARO M

Thickness:
9 / 12 mm

Single panel size:
600 x 600 mm
600 x 1200 mm
600 x 2400 mm





↗ Caro M/L DF-32

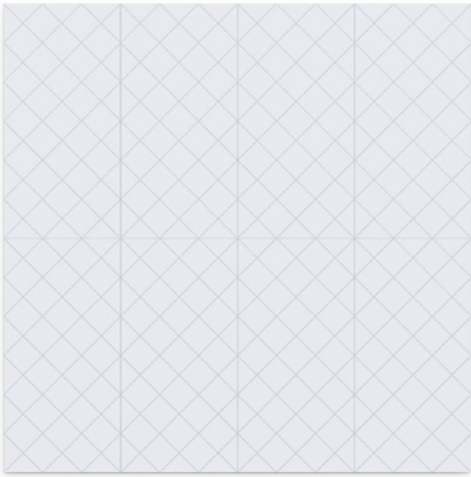
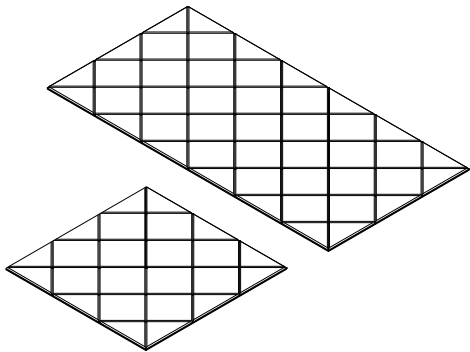


Caro L DF-18 ↖

CARO L

Thickness:
9 / 12 mm

Single panel size:
600 x 600 mm
600 x 1200 mm
600 x 2400 mm





↗ Ingots DF-08



Ingots DF-02 ↖

INGOTS

Thickness:

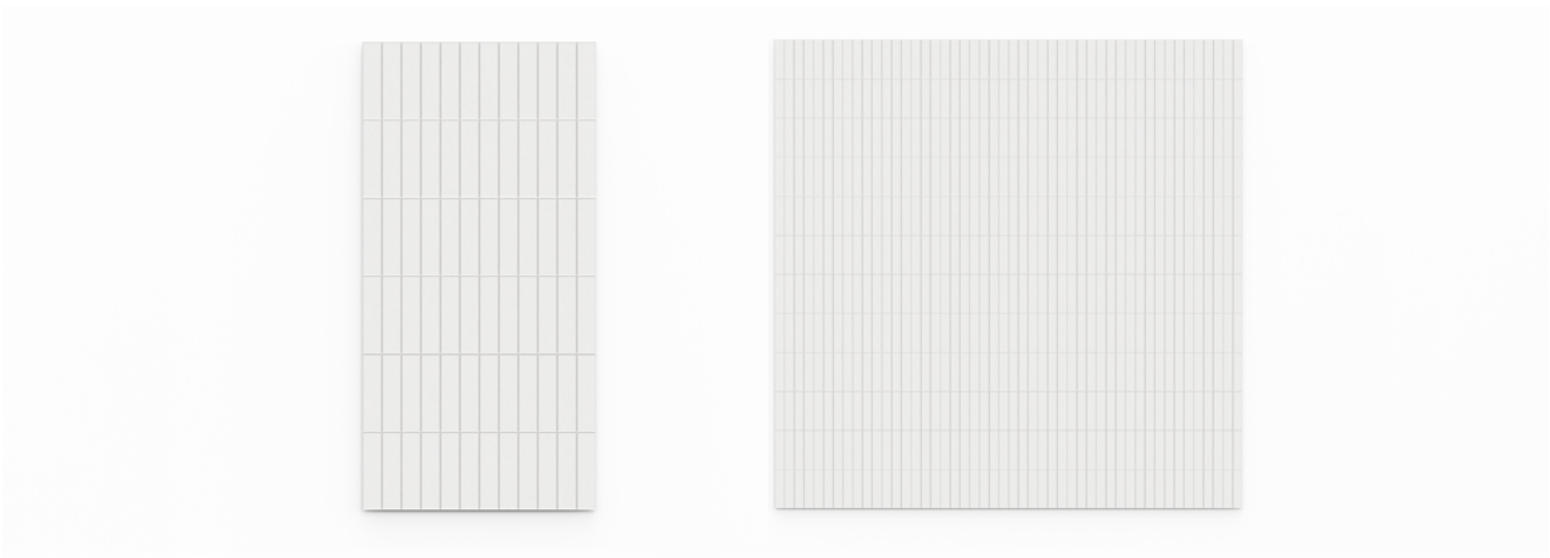
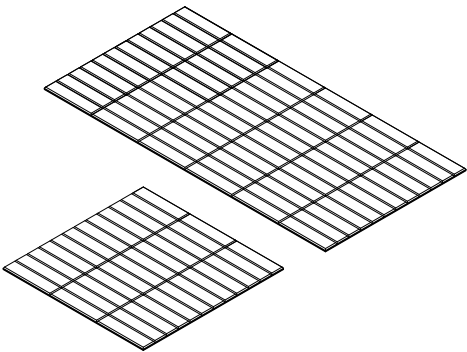
9 / 12 mm

Single panel size:

600 x 600 mm

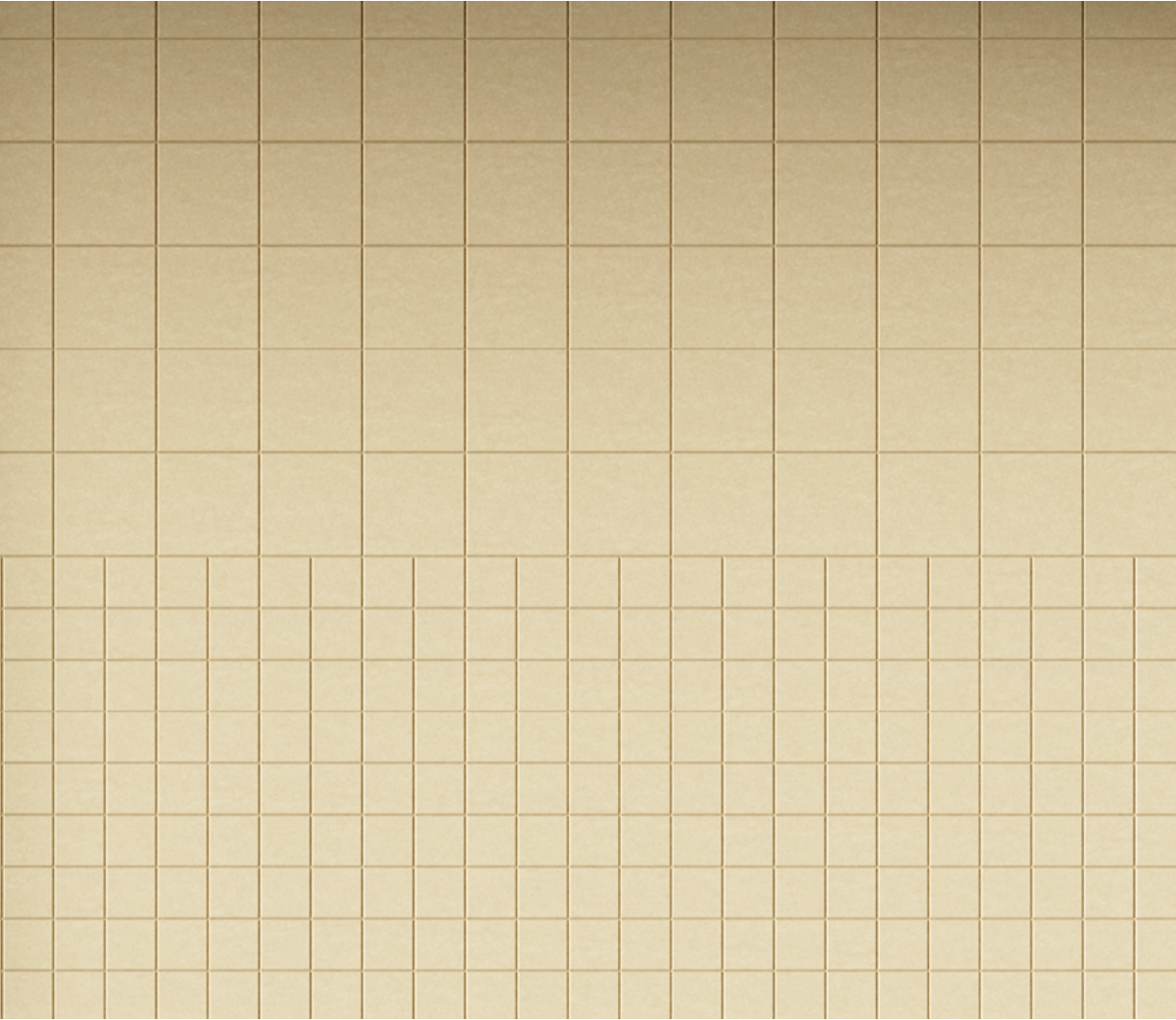
600 x 1200 mm

600 x 2400 mm





↗ Grid M/L DF-04

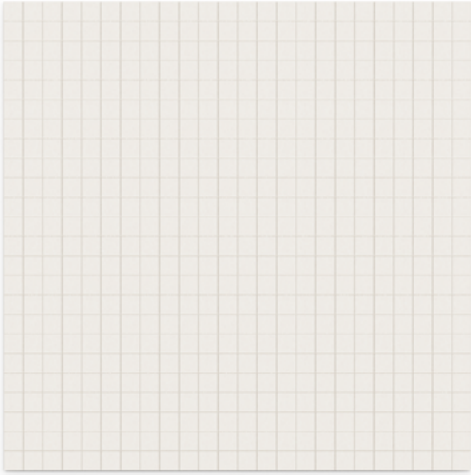
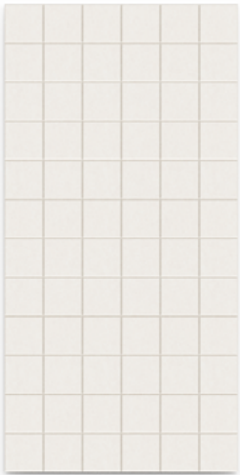
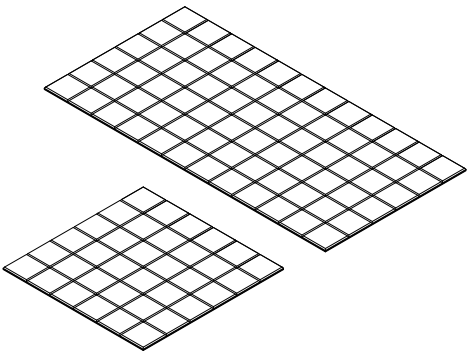


Grid M/L DF-57 ↖

GRID M

Thickness:
9 / 12 mm

Single panel size:
600 x 600 mm
600 x 1200 mm
600 x 2400 mm





↗ Grid L DF-08

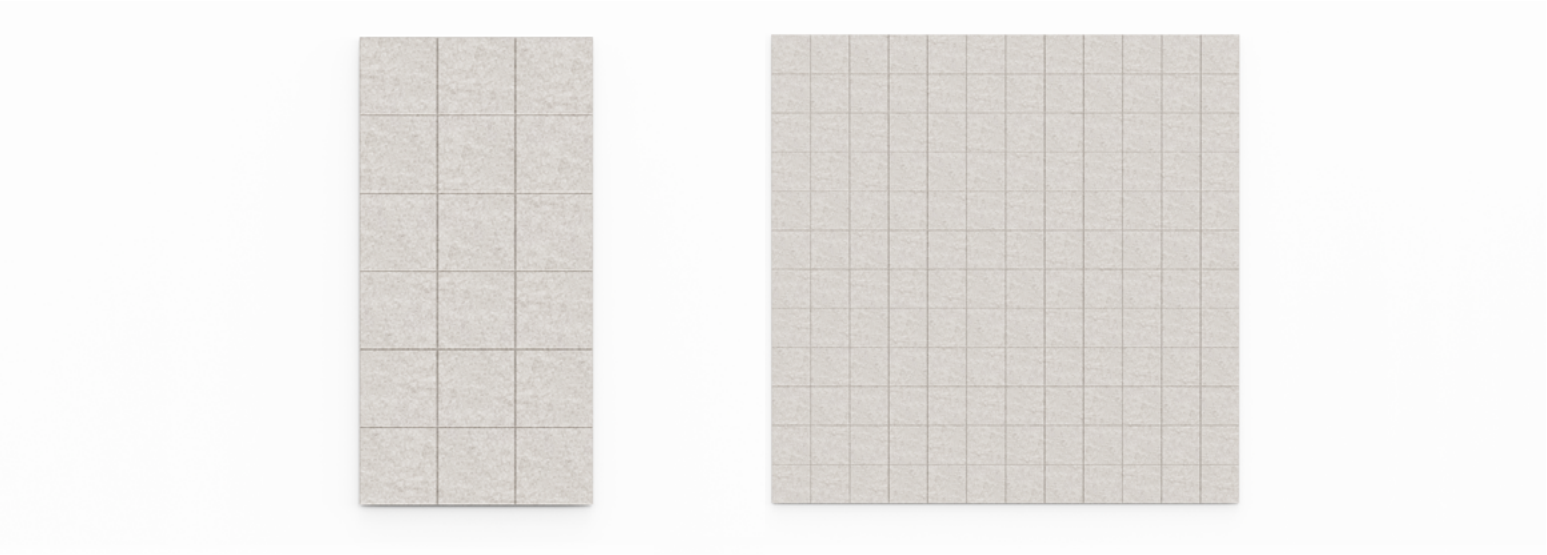
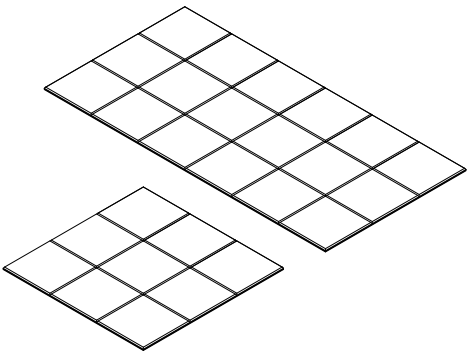


Grid M/L DF-08 ↖

GRID L

Thickness:
9 / 12 mm

Single panel size:
600 x 600 mm
600 x 1200 mm
600 x 2400 mm





↗ Trellis DF-32



Trellis DF-42 ↖

TRELLIS

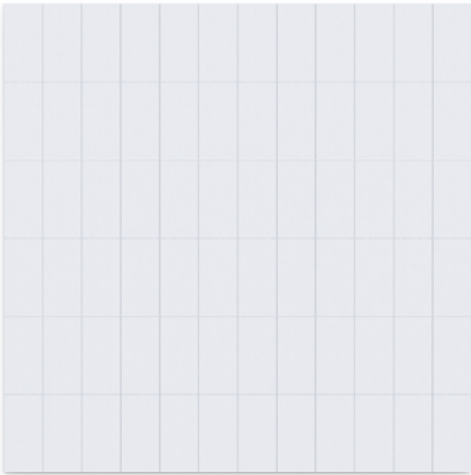
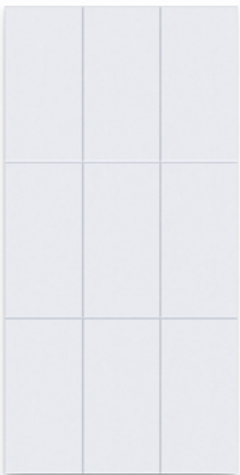
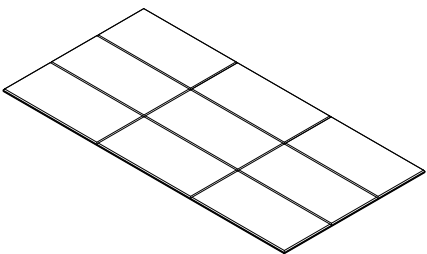
Thickness:

9 / 12 mm

Single panel size:

600 x 1200 mm

600 x 2400 mm





↗ Slant DF-58



Slant DF-31 ↖

SLANT

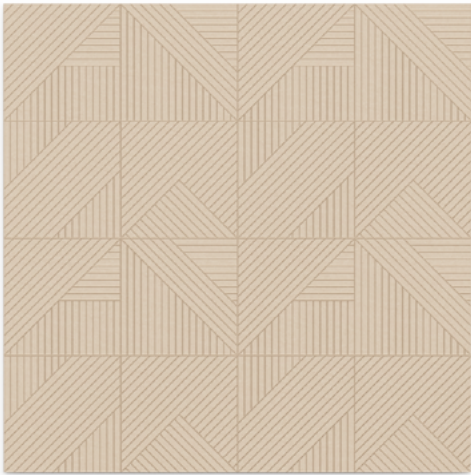
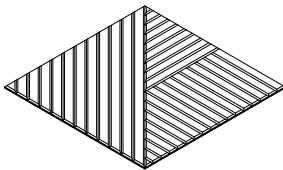
Thickness:

9 / 12 mm

Single panel size:

600 x 600 mm

Pattern includes 4 types of tiles,
each in equal quantity.





↗ Diagonal S/M/L DF-42

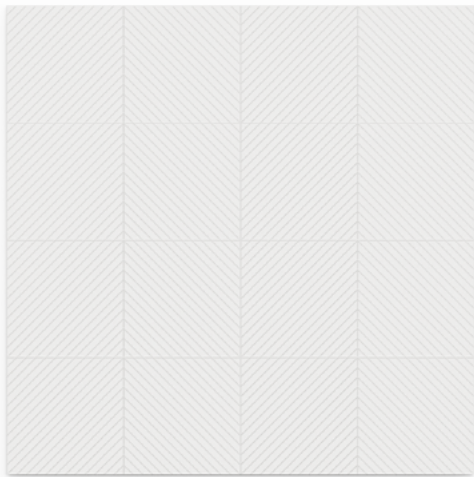
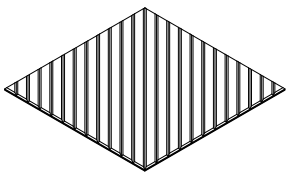


Diagonal S/M/L DF-18 ↖

DIAGONAL S

Thickness:
9 / 12 mm

Single panel size:
600 x 600 mm





↗ Diagonal S/M/L DF-31

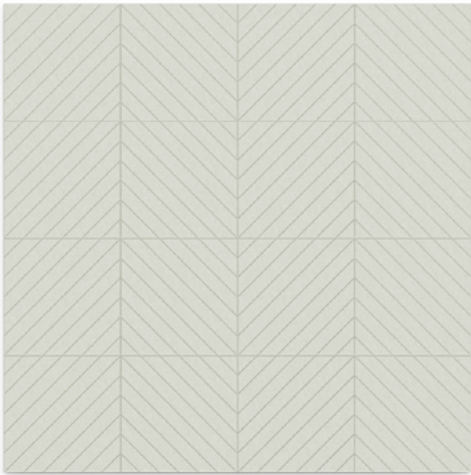
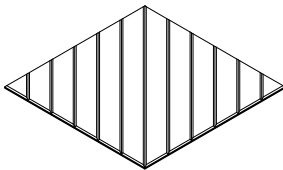


Diagonal S/M/L DF-19 ↖

DIAGONAL M

Thickness:
9 / 12 mm

Single panel size:
600 x 600 mm





↗ Diagonal S/M/L DF-04

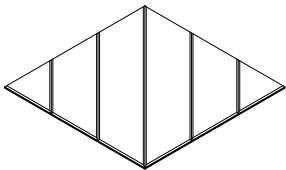


Diagonal S/M/L DF-57 ↖

DIAGONAL L

Thickness:
9 / 12 mm

Single panel size:
600 x 600 mm



Technical data

Size and quantity	600 x 600 – 16 panels
	600 x 1200 – 8 panels
	600 x 2400 – 4 panels
Coverage per set	5,76 m²
Thickness & density	9 mm – 1900 g/m²
	12 mm – 2400 g/m²
Material	100% PET (60% from recycled plastic bottles)
Installation	Optional StickyFelt™ glue (self-adhesive back surface)
	Read more about the installation here .

Product features



recyclable



VOC free



acoustical



ventilated



insulated



easy to cut



light weight



self-adhesive



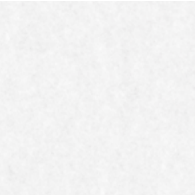
shatterproof



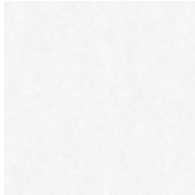
buffered

Colours

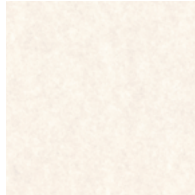
Available in 18 curated colours that harmonize beautifully in any setting. Mix and match colors and patterns to create a truly unique space.




DF-01




DF-02




DF-03




DF-07




DF-24




DF-53



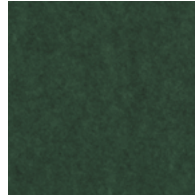
DF-04



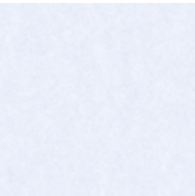
DF-58




DF-57



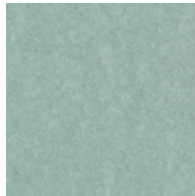
DF-31




DF-18




DF-19




DF-23



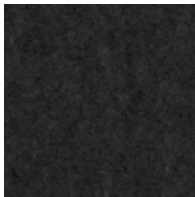
DF-42




DF-32



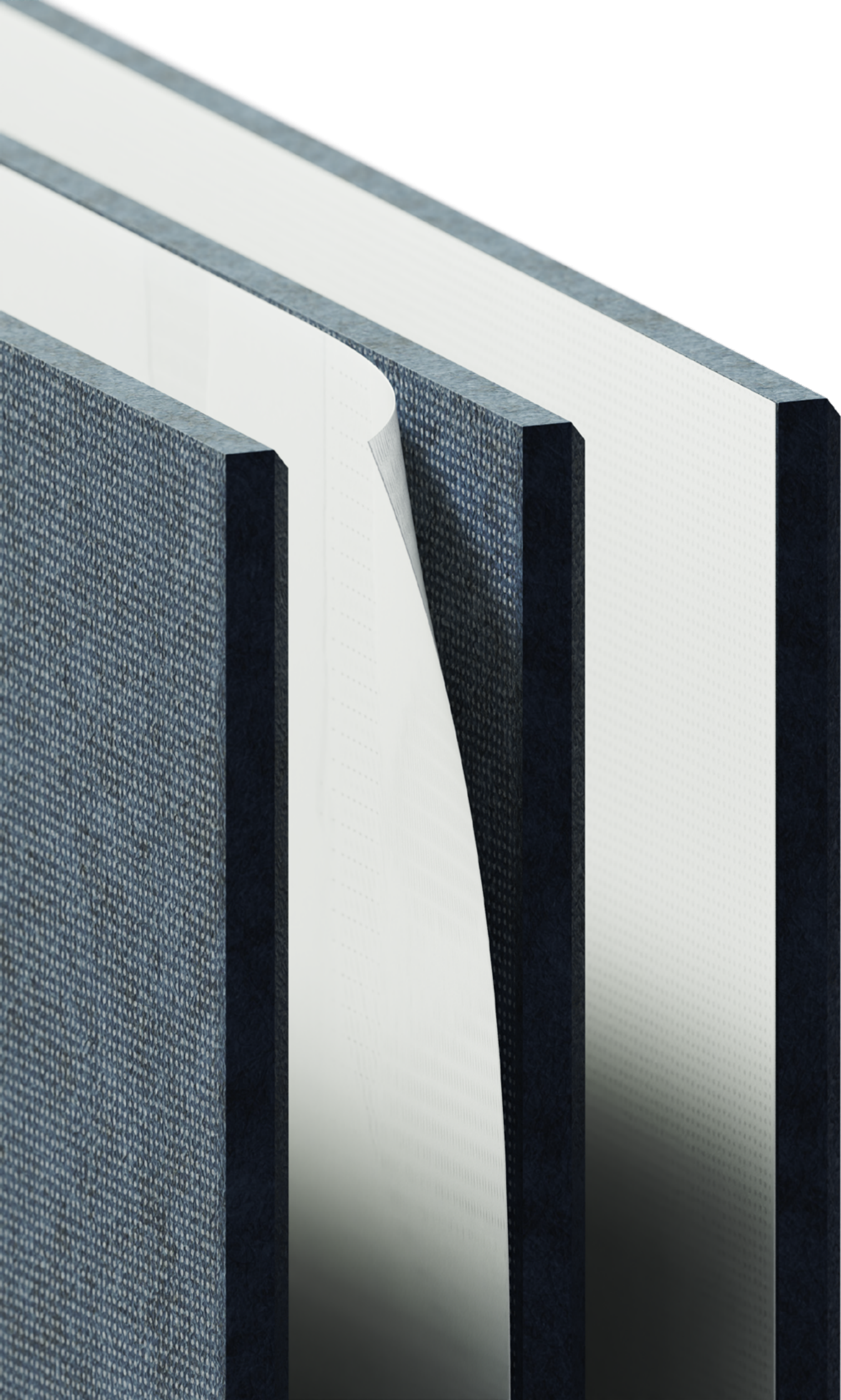
DF-08



DF-15



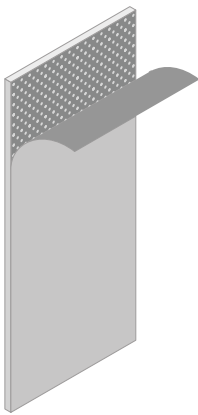
DF-16



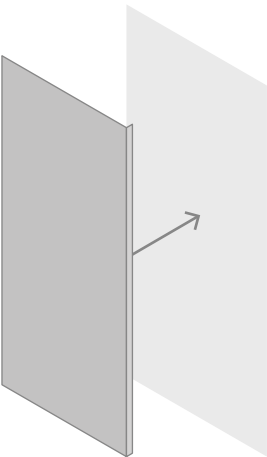
PET felt panels can be easily and quickly installed using the pre-applied DF-DOT adhesive on the backside, developed and branded as StickyFelt™. This permanent solution allows for easy installation, repositioning, and removal of the panels. Any glue residue can be easily removed from both the wall and the PET felt panels. This simple DIY process ensures a seamless and secure application. More details on how to complete the installation are provided below.



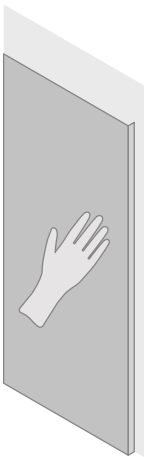
- ① Make sure the surface is flat, clean and dry and that your workspace won't make accidental staining of the panels.



- ② Peel the protective paper from the adhesive on the back of the panel, then reposition the panel on the wall in the desire place and then press the first panel against the wall.



- ③ Begin the installation by attaching the panel starting from one edge, taking care to align it correctly right from the start. Apply even pressure across the entire surface to ensure proper adhesion. Hold the panel in position for a few moments, then continue the same steps for the remaining panels. The adhesive forms an instant bond on contact but reaches maximum strength after 24 hours.



- ! We do not guarantee the effectiveness of this application due to the variety of surface types, primarily because we have no control over the surface condition or the method of application. Therefore, anyone using StickyFelt should carry out a small-scale adhesion test before proceeding with the final installation on larger areas. If the adhesion of StickyFelt is not satisfactory, the same panels can be additionally installed using traditional mounting adhesives recommended in our Installation Guide.

WallAttract™



contact@defelt.com

www.defelt.com

+48 669 210 173

DeFelt Sp. z o.o.

ul. Rakietowa 35

54-615 Wrocław, Poland

© 2025
All Rights Reserved

DeFelt®



The DeFelt® logo is a nationally and internationally registered trademark, exclusively owned by DeFelt sp. z o.o.. It cannot be reproduced or used for commercial or other purposes without prior written authorization from DeFelt. DeFelt has ensured that the information contained in this catalog is as accurate as possible; however, it declines all responsibility for any errors. DeFelt reserves the right to make modifications and improvements of a technical or aesthetic nature to the products at any time without notice. The reproduction (even partial) of this catalog, for any reason and with any means, is prohibited without the prior written permission of DeFelt.

Please note that the actual appearance of DeFelt felt products may differ or vary slightly from the images shown in the catalog. This is because each type and batch of felt and fabric has its own unique characteristics. We view this as an advantage for each product is unique and unrepeatable. Keep in mind that the colors of PET, felts, and fabrics may vary slightly from what you see in the catalog. For the most accurate representation, we recommend referring to our sample book or sample individually sent.

Due to the production process of both fiber and PET felt, there may be slight variations in material between different production batches. Additionally, please take into consideration that PET panels have distinct left and right sides so always try to present only one side of the sheet. Due to the manufacturing process, the felt board may show differences in shade depending on the direction of laying. We recommend laying all pieces in one direction to avoid undesirable visual effects. This is particularly important to consider when installing larger structures, such as wall-mounted panels or acoustic drop ceiling.